



## **COURSE SYLLABUS**

Texas A&M University- San Antonio

College of Arts and Sciences

PSYC 4351: Directed Research in Psychology (3 credits)

PSYC 4251: Directed Research in Psychology (2 credits)

PSYC 4151: Directed Research in Psychology (1 credits)

PSYC 4051: Directed Research in Psychology (0 credits)

Fall 2024

Amy K. Dicke Bohmann, Ph.D.

E-Mail: [abohmann@tamusa.edu](mailto:abohmann@tamusa.edu)

Office Hours: R 1:30-3:30

Phone: 210-784-2206

Office: STEM 237A Lab : STEM 241G

Lab meeting 11:30-12:30 Wednesdays

Meetings in STEM 241D

**Office Hours Notes:** On weeks I am out of town on Thursdays, I will be available Tuesday from 1:45 until 3:30 for office hours.

### **Texts:**

Make sure you have access to the 7<sup>th</sup> Edition of the APA Style Manual.

**Other Cost:** If you are planning to present a poster at either SWPA or SRS, you will have a \$24 poster cost. Power Grafx charges \$24 for poster printing with our university discount. You may incur travel costs to SWPA or other conferences.

### **Catalog Description:**

4351. Directed Research. V: 0-3 Individual instruction course for advanced and qualified undergraduates to obtain supervised research experience in psychology. Student will assist with a research project by working under the individual guidance of a psychology faculty member. Requirements may entail library research, data collection, data entry, statistical analysis and or assistance in planning and conducting parts of a research project. A paper on the research experience is required. Consent of instructor required. Variable credit for a total of 6 maximum. Prerequisites: PSYC 2301, PSYC 2388. Prerequisite or corequisite: PSYC 3389. (If students are taking PSYC 4051, they can take PSYC 2388 concurrently.)

Course may also be taken as PSYC 4251, 4151, or 4051, for 2, 1, or 0 credits.

### **Course Objectives**

#### **Objectives:**

- Students will work on research projects, some of which are their own, some of which are faculty projects, and some of which are projects from other students.
- Students will learn about the research process, from idea generation and background literature, to collecting data, writing results, conference presentation, and publication, if possible.

## **Assessment of Student Learner Outcomes**

Students will be expected to participate in all aspects of the class. Missing meetings and missing deadlines will result in a lower grade. In addition, students are expected to keep track of their hours spent on class work and that must be turned in in a timely manner. A final project will also be necessary for assessment. This is usually an APA-Style paper, including results and discussion. Because these are works in progress, you will not get a grade on the paper; you will meet with me to go over it so that you can make changes as you continue your project.

## **Activities:**

### **Research Projects:**

Students are expected to turn in a project at the end of the semester if they are taking the course for credit. Students will write an APA-Style paper as their end-of-semester project.

### **Activity Logs**

All students taking this course for credit must spend at least 8-9 hours per week on the course (3-credit students), including the one-hour research meeting (total research meetings/week), and all must be recorded in an activity log. Two-credit students need to complete 6 (5+research meeting) hours a week, and one-credit students must complete 3 hours a week. Volunteers will have hours that vary. The activity logs will be turned in at midterm and at the end of the year. Hours may be spent in the lab, running participants, analyzing data, and may be completed in the library or other computer labs as well. During pandemic conditions, all work may be completed at home if necessary. Zero credit students (volunteers) do not need to complete an activity log.

### **Meetings:**

All students, including volunteers who are taking this as a qualifying semester for their Directed Research course, are expected to attend all meetings. Students who will have PSYC 4051 on their transcript are expected to attend regularly. Other volunteers are expected to attend whenever they can. These drop-in volunteers typically already had a qualifying semester. In the summer, all meetings will take place via zoom also. During SWPA, we will be presenting our projects in lieu of meeting.

### **Conferences**

Students will be expected to present research at a conference, if it is safe. If you are concerned about safety, you will not be required to submit to a conference. Conferences include:

**SWPA:** Southwestern Psychological Association, March 28-30, 2025, Little Rock, AR (anyone can present, students or alumni)

**RISE 2024:** Formerly Student Research Symposium, on our campus April 21-25, 2025. (students and December alumni can present)

**SPSP:** Society for Personality and Social Psychology, February 20-22, 2025, Denver, CO. (Anyone can present, students or alumni). Call for posters is in June 2024.

If you plan to present next year, SPSP will take place in Austin, TX (deadline for submission early September for posters), and SWPA will be in Frisco, TX (submission deadline in October or November).

**Citi Training:** Please make sure Citi Training is up to date, including Social and Behavioral Research and Responsible Conduct of Research. [www.citiprogram.org](http://www.citiprogram.org)

### **Psychology Speaker Series**

Dates will be announced.

## **Deadlines**

All deadlines given to you must be met if you are taking the course for credit, in order to get an A.

## **Work Space Rules:**

I have printed the rules during normal times below.

All students are given access to 241 and 341. You may work in 241G, and the waiting area which is 241A. If no one has reserved 241D, you can use that area as well, but please let Jasmyne know, as it is a popular room. Anahi is our Grad RA who will keep the schedule for the 241 conference room. If a confidential meeting occurs in 241D, you may be asked to relocate to 341 (Stephanie Gooding is the grad RA in charge of that space). It may be crowded, but you can use the waiting room area with computers, and conference room area (341I) if there isn't a meeting going on. You can also reserve library study rooms. If you are running participants, please reserve via SONA.

STEM 241 B must remain locked at all times because of the equipment stored inside. If B has an open door any time you are in the lab, please report it to a psych faculty member immediately.

Do not prop outer door open unless you are INSIDE the lab and waiting for a participant. If you need to run to the restroom, and are leaving no one inside, you must close the door. Participants may not be left in the lab alone, unless they already have access to the lab (but few will have lab access!).

## **Course Grades**

Each student's grade will be based solely on his/her performance. Students will not compete against one another for grades (i.e., the instructor will not limit the number of As, Bs, etc.). An individual's course grade is based on his or her raw score points (i.e., the total number of points earned during the semester). For example, using the table below, a student who earns 850 points during the semester will earn a "B." A student who has a total of 642 points at the end of the semester will earn a "D" in the course.

### *Letter Grade Cutoff Table*

#### *Course Letter Grade*

A	All deadlines met, meetings attended, excellent participation, good project, required hours achieved
B	All of the above, but most of the time; good project.
C	All of the above, but only some of the time; average project.
D	Unacceptable work
F	Unacceptable work

## **IMPORTANT POLICIES AND RESOURCES**

**Academic Accommodations for Individuals with Disabilities:** Texas A&M University-San Antonio is committed to providing all students with reasonable access to learning opportunities and accommodations in accordance with The Americans with Disabilities Act, as amended, and Section 504 of the Rehabilitation Act. If you experience barriers to your education due to a disability or think you may have a disability, Disability Support Services is located in the Central Academic Building, Suite 210. You can also contact us via phone at (210) 784-1335, visit us <https://www.tamusa.edu/Disability-Support-Services/index.html> or email us at [dss@tamusa.edu](mailto:dss@tamusa.edu). Disabilities may include, but are not limited to, attentional, learning, mental health, sensory, physical, or chronic health conditions. All students are encouraged to discuss their disability-related needs with Disability Support Services and their instructors as soon as possible.

**Academic Learning Center:** The Academic Learning Center provides free course-based tutoring to all currently enrolled students at Texas A&M University-San Antonio. Students wishing to work with a tutor can make appointments through the Brainfuse online tutoring platform. Brainfuse can be accessed in the Tools section of Blackboard. You can contact the Academic Learning Center by emailing [tutoring@tamusa.edu](mailto:tutoring@tamusa.edu), calling (210) 784-1307, or visiting the Central Academic Building, room 202.

**Counseling/Mental Health Resources:** As a college student, there may be times when personal stressors interfere with your academic performance and negatively impact your daily functioning. If you are experiencing emotional difficulties or mental health concerns, support is available to you through the Student Counseling Center (SCC). To schedule an appointment, call 210-784-1331 or visit Madla 120. All mental health services provided by the SCC are free and confidential (as the law allows). The Student Counseling Center provides brief individual and group therapy, crisis intervention, consultation, case management, and prevention services. For more information on SCC services visit [tamusa.edu/studentcounseling](https://tamusa.edu/studentcounseling)

Crisis support is available 24/7 by calling the SCC at 210-784-1331 (after-hours select option '2').

Additionally, the TELUS Student Support App provides a variety of mental health resources to including support for in the moment distress, an anonymous peer to peer support network, mental health screenings, podcasts, and articles to improve your mental wellbeing.

**Emergency Preparedness:** JagE Alert is Texas A&M University-San Antonio's mass notification. In the event of an emergency, such as inclement weather, students, staff and faculty, who are registered, will have the option to receive a text message, email with instructions and updates. To register or update your information visit: <https://tamusa.bbcportal.com/>.

More information about Emergency Operations Plan and the Emergency Action Plan can be found here: <https://www.tamusa.edu/about-us/emergency-management/>.

Download the SafeZone App (<https://safezoneapp.com/>) for emergencies or call (210) 784-1911. Non-Emergency (210) 784-1900.

**Financial Aid and Verification of Attendance:** According to the following federal regulation, 34 CFR 668.21: U.S. Department of Education (DoE) Title IV regulation, a student can only receive Title IV funds based on Title IV eligibility criteria which include class attendance. If Title IV funds are disbursed to ineligible students (including students who fail to begin attendance), the institution must return these funds to the U.S. DoE within 30 days of becoming aware that the student will not or has not begun attendance. Any student receiving federal financial aid who does not attend by the census date will have their financial aid terminated and returned to the DoE. Please note that any student who stops attending at any time during the semester, a Care report will be submitted, and you will possibly be dropped from the class. Your financial aid may have to be recalculated and a portion of your federal aid may have to be returned to the DoE.

**Writing, Language, and Digital Composing Center:** The Writing, Language, and Digital Composing Center supports graduate and undergraduate students in all three colleges as well as faculty and staff. Tutors work with students to develop reading skills, prepare oral presentations, and plan, draft, and revise their written assignments. Our language tutors support students enrolled in Spanish courses and students composing in Spanish for any assignment. Our digital studio tutors support students working on digital projects such as eportfolios, class presentations, or other digital multimedia projects. Students can schedule appointments through JagWire under the Student Services tab. Click on "Writing, Language, and Digital Composing Center" to make your appointment. The Center offers face-to-face, synchronous online, and asynchronous digital appointments. More information about what services we offer, how to make an appointment, and how to access your appointment can be found on our website at <https://www.tamusa.edu/academics/>.

**Meeting Basic Needs:** Any student who has difficulty affording groceries or accessing sufficient food to eat every day or who lacks a safe and stable place to live, and believes this may affect their performance in the course, is urged to submit a CARE referral (<https://www.tamusa.edu/university-policies/Student-Rights-and-Responsibilities/file-a-report.html>) for support. Furthermore, please notify the professor if you are comfortable in doing so. This will enable them to direct you to available resources.

**Military Affairs:** Veterans and active-duty military personnel are welcomed and encouraged to visit the Office of Military Affairs for any question involving federal or state VA Education Benefits. Visit the Patriots' Casa building, room 202, or to contact the Office of Military Affairs with any questions at [military.va@tamusa.edu](mailto:military.va@tamusa.edu) or (210)784-1397.

**Religious Observances:** Texas A&M University-San Antonio recognizes the diversity of faiths represented among the campus community and protects the rights of students, faculty, and staff to observe religious holidays according to their tradition. Under the policy, students are provided an opportunity to make up any examination, study, or course work requirements that may be missed due to a religious observance provided they notify their instructors before the end of the second week of classes for regular session classes.

**The Six-Drop Rule:** Students are subject to the requirements of Senate Bill (SB) 1231 passed by the Texas Legislature in 2007. SB 1231 limits students to a maximum of six (6) non-punitive course drops (i.e., courses a student chooses to drop) during their undergraduate careers. A non-punitive drop does not affect the student's GPA. However, course drops that exceed the maximum allowed by SB 1231 will be treated as "F" grades and will impact the student's GPA.

**Statement of Harassment and Discrimination:** Texas A&M University-San Antonio is committed to the fundamental principles of academic freedom, equal opportunity, and human dignity. To fulfill its multiple missions as an institution of higher learning, A&M-San Antonio encourages a climate that values and nurtures collegiality and the uniqueness of the individual within our state, nation, and world. All decisions and actions involving students and employees should be based on applicable law and individual merit. Texas A&M University-San Antonio, in accordance with applicable federal and state law, prohibits discrimination, including harassment, on the basis of race, color, sex, religion, national origin, age, disability, genetic information, veteran status, sexual orientation, gender identity, gender expression, or pregnancy/parenting status. Individuals who believe they have experienced harassment or discrimination prohibited by this statement are encouraged to contact the appropriate offices within their respective units.

Texas A&M University-San Antonio faculty are committed to providing a safe learning environment for all students and for the university as a whole. If you have experienced any form of sex- or gender-based discrimination or harassment, including sexual assault, sexual harassment, domestic or dating violence, or stalking, know that help and support are available. A&M-San Antonio's Title IX Coordinator can support those impacted by such conduct in navigating campus life, accessing health and counseling services, providing academic and housing accommodations, and more. The university strongly encourages all students to report any such incidents to the Title IX Coordinator. Please be aware that all A&M-San Antonio employees (other than those designated as confidential resources such as counselors and trained victim advocates) are required to report information about such discrimination and harassment to the university. This means that if you tell a faculty member about a situation of sexual harassment, sexual violence, or other related misconduct, the faculty member must share that information with the university's Title IX Coordinator ([titleix@tamusa.edu](mailto:titleix@tamusa.edu), 210-784-2061, CAB 439K). If you wish to speak to a confidential employee who does not have this reporting requirement, you can contact the Student Counseling Center at (210) 784-1331 or visit them in Madla 120.

**Pregnant/Parenting Students:** Texas A&M-San Antonio does not require a pregnant or parenting student, solely because of that status or issues related to that status, to (1) take a leave of absence or withdraw from their degree or certificate program; (2) limit the student's studies; (3) participate in an alternative program; (4) change the student's major, degree, or certificate program; or (5) refrain from joining or cease participating in any course, activity, or program at the University. The university will provide such reasonable accommodations to pregnant students as would be provided to a student with a temporary medical condition that are related to the health and safety of the student and the student's unborn child. These could include maintaining a safe distance from substances, areas, and activities known to be hazardous to pregnant individuals and their unborn child; excused absences because of illness or medical appointments; modified due dates for assignments; rescheduled tests/exams; taking a leave of absence; and being provided access to instructional materials and video recordings of lectures for excused absences, if these would be provided to any other student with an excused absence. Pregnant/parenting students are

encouraged to contact the Title IX Coordinator with any questions or concerns related to their status (titleix@tamusa.edu; 210-784-2061; CAB 439K).

Texas A&M-San Antonio has also designated the Title IX Coordinator as the liaison officer for current or incoming students who are the parent or guardian of a child younger than 18 years of age. The Title IX Coordinator can provide students with information regarding support services and other resources.

**Students' Rights and Responsibilities:** The following statement of students' rights and responsibilities is intended to reflect the philosophical base upon which University Student Rules are built. This philosophy acknowledges the existence of both rights and responsibilities, which is inherent to an individual not only as a student at Texas A&M University-San Antonio but also as a citizen of this country.

#### Students' Rights

1. A student shall have the right to participate in a free exchange of ideas, and there shall be no University rule or administrative rule that in any way abridges the rights of freedom of speech, expression, petition and peaceful assembly as set forth in the U.S. Constitution.
2. Each student shall have the right to participate in all areas and activities of the University, free from any form of discrimination, including harassment, on the basis of race, color, national or ethnic origin, religion, sex, disability, age, sexual orientation, gender identity, gender expression, and pregnancy/parenting or veteran status in accordance with applicable federal and state laws.
3. A student has the right to personal privacy except as otherwise provided by law, and this will be observed by students and University authorities alike.
4. Each student subject to disciplinary action arising from violations of university student rules shall be assured a fundamentally fair process.

#### Students' Responsibilities

1. A student has the responsibility to respect the rights and property of others, including other students, the faculty, and administration.
2. A student has the responsibility to be fully acquainted with the published University Student Rules found in the Student Handbook, Student Code of Conduct, on our website, and University Catalog, and to comply with them, as well as with federal, state, and local laws.
3. A student has the responsibility to recognize that student actions reflect upon the individuals involved and upon the entire University community.
4. A student has the responsibility to recognize the University's obligation to provide a safe environment for learning.
5. A student has the responsibility to check their university email for any updates or official university notifications.

We expect that students will behave in a manner that is dignified, respectful, and courteous to all people, regardless of sex, ethnic/racial origin, religious background, sexual orientation, or disability. Conduct that infringes on the rights of another individual will not be tolerated.

Students are expected to exhibit a high level of honesty and integrity in their pursuit of higher education. Students engaging in an act that violates the standards of academic integrity will find themselves facing academic and/or disciplinary sanctions. Academic misconduct is any act, or attempt, which gives an unfair advantage to the student. Additionally, any behavior specifically prohibited by a faculty member in the course syllabus or class discussion may be considered as academic misconduct. For more information on academic misconduct policies and procedures please review the Student Code of Conduct (<https://www.tamusa.edu/university-policies/student-rights-and-responsibilities/documents/Student-Handbook-2022-23.pdf>) or visit the resources available in the OSRR website (<https://www.tamusa.edu/university-policies/student-rights-and-responsibilities/academic-integrity.html>).

#### **Use of Generative AI Permitted Under Some Circumstances or With Explicit Permission**

There are situations and contexts within this course where you may be asked to use artificial intelligence (AI) tools to explore how they can be used. Outside of those circumstances, you should not use AI tools to generate content (text, video, audio, images) that will end up in any student work (assignments, activities, discussion

responses, etc.) that is part of your evaluation in this course. Any student work submitted using AI tools should clearly indicate with attribution what work is the student's work and what part is generated by the AI. In such cases, no more than 25% of the student work should be generated by AI. If any part of this is confusing or uncertain, students should reach out to their instructor for clarification before submitting work for grading. Use of AI-generated content without the instructor's permission and/or proper attribution in this course qualifies as academic dishonesty and violates Texas A&M-San Antonio's standards of academic integrity.

NOTE: Guidance for how to cite AI-generators, like ChatGPT, can be found here <https://apastyle.apa.org/blog/how-to-cite-chatgpt>

### **Important Dates:**

January 21 First day of class

March 10-15 Spring Break

April 21 Last day to drop with an automatic "W"

April 18 Study Day – No classes

April 28 Last day to drop a course or withdraw from the University

May 5 Last day of classes

May 6 Study Day – No classes

May 7-13 Final exams

May 16 Grades due

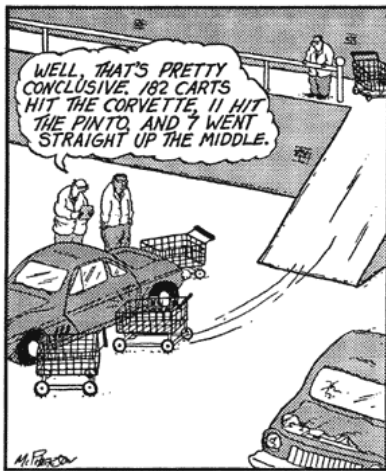
May 20 Commencement

The complete academic calendar is available online:

<https://www.tamusa.edu/academics/academic-calendar/index.html>

**\*\*Any material on this syllabus is subject to change if a compelling situation arises. You will be notified via email and Bb announcement.\*\***

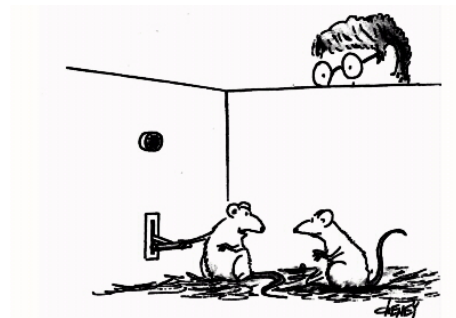
**\*\*Any material on this syllabus is subject to change if a compelling situation arises. You will be notified via email and Bb announcement.\*\***



Researchers at MIT prove that rolling shopping carts will almost invariably hit the most expensive car in their vicinity.



WIT OF THE WORLD



It's a rather interesting phenomenon. Every time I press this lever, that post-graduate student breathes a sigh of relief.



Save 6K+

By Nik Papageorgiou